

Recent timber construction in Italy: general characteristics, quality and faults based on case studies

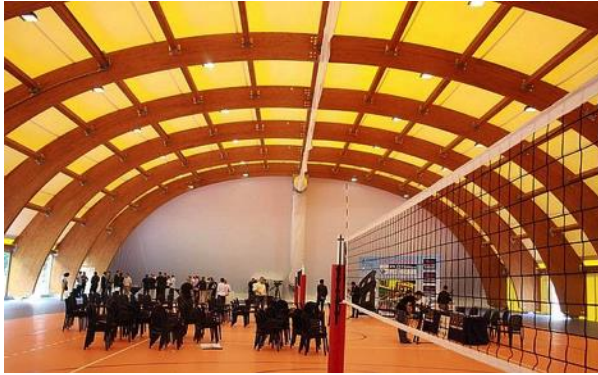
Nicola Macchioni

Sabrina Palanti



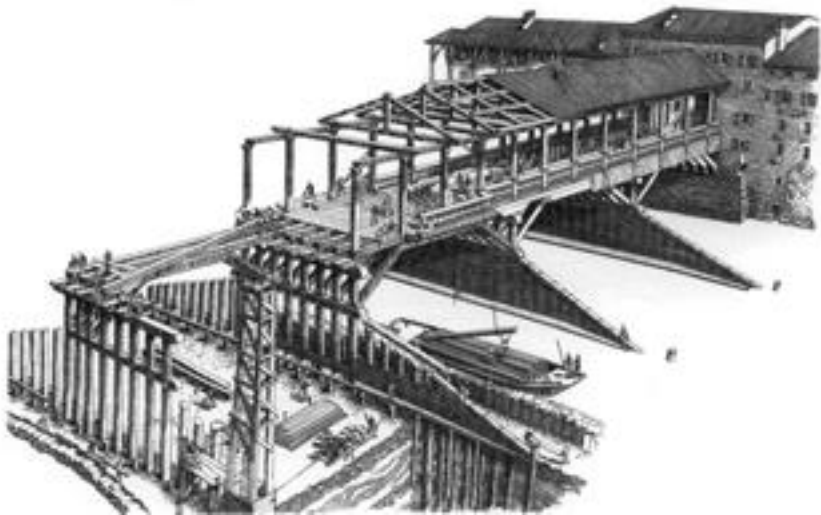
The Italian building tradition is based on stones and bricks. Wood is very rarely visible, but not absent: it is present for horizontal and roof structures.

'80^{ies} – '90^{ies} large span glulam structures









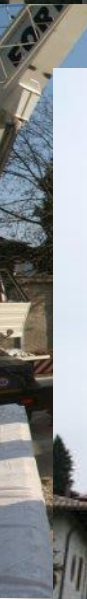


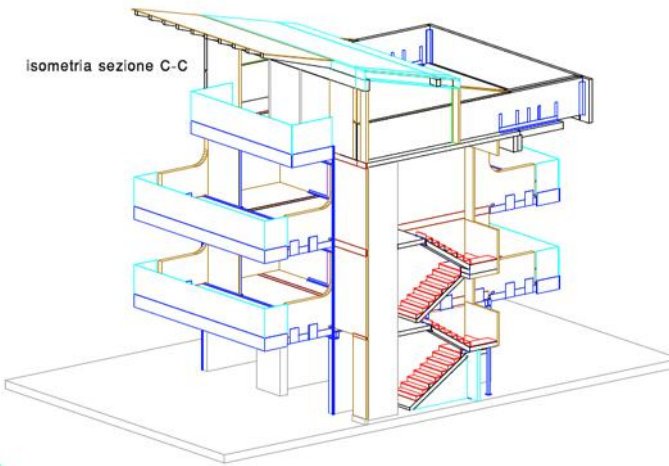
Last decade: CLT structures



The advantages of timber structures and in only four days of assembling customers have the complete idea of the inner distribution of spaces.

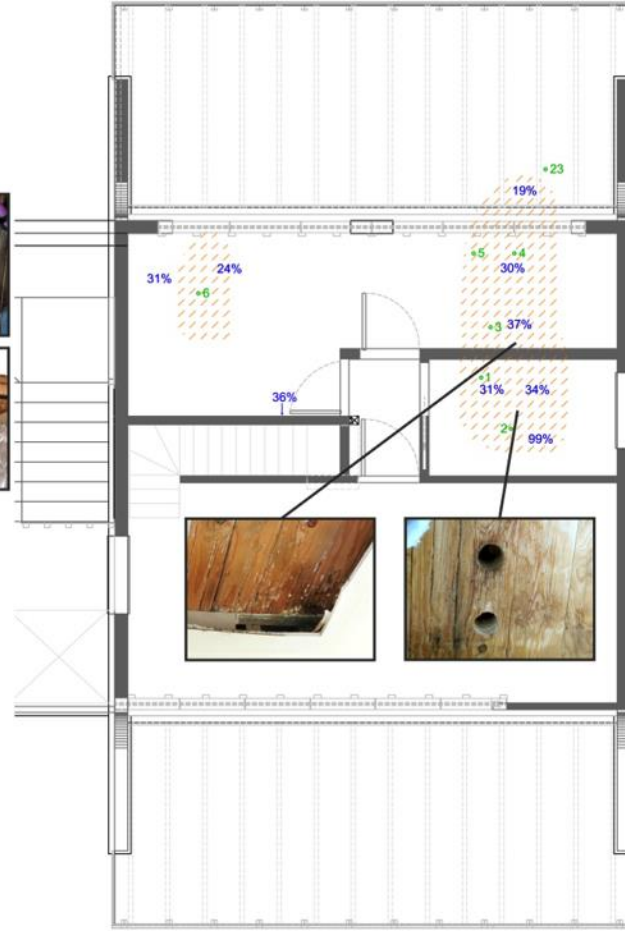






CERVIA Casa Albrizzi

Development of rot just after the conclusion of building, before selling the apartments



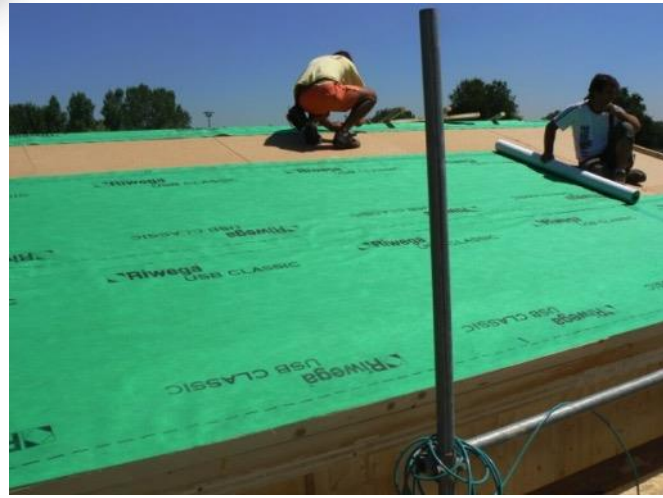
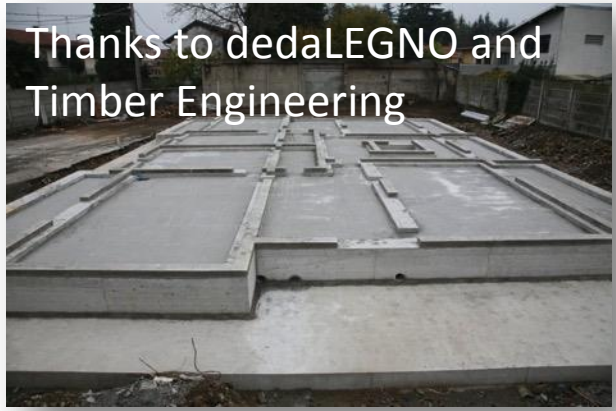
Kindergarten in Gaiole in Chianti







Thanks to dedaLEGNO and Timber Engineering



Where is the problem?

Timber structures are nowadays “fashionable”.

Thus several architects/engineers are now designing timber buildings, but we can detect:

- Lack of knowledge on the raw material (*they told me that glulam is everlasting...*);
- Lack in academic education;
- Few designers want to learn from the past;
- Few professional contacts between final users and who has the knowledge;
- Few specialists on wood;
- Lack on guidelines regarding assembling and diagnosis.



We
eng
lev

-
-
-



Thank you for your attention

macchioni@ivalsa.cnr.it

palanti@ivalsa.cnr.it